

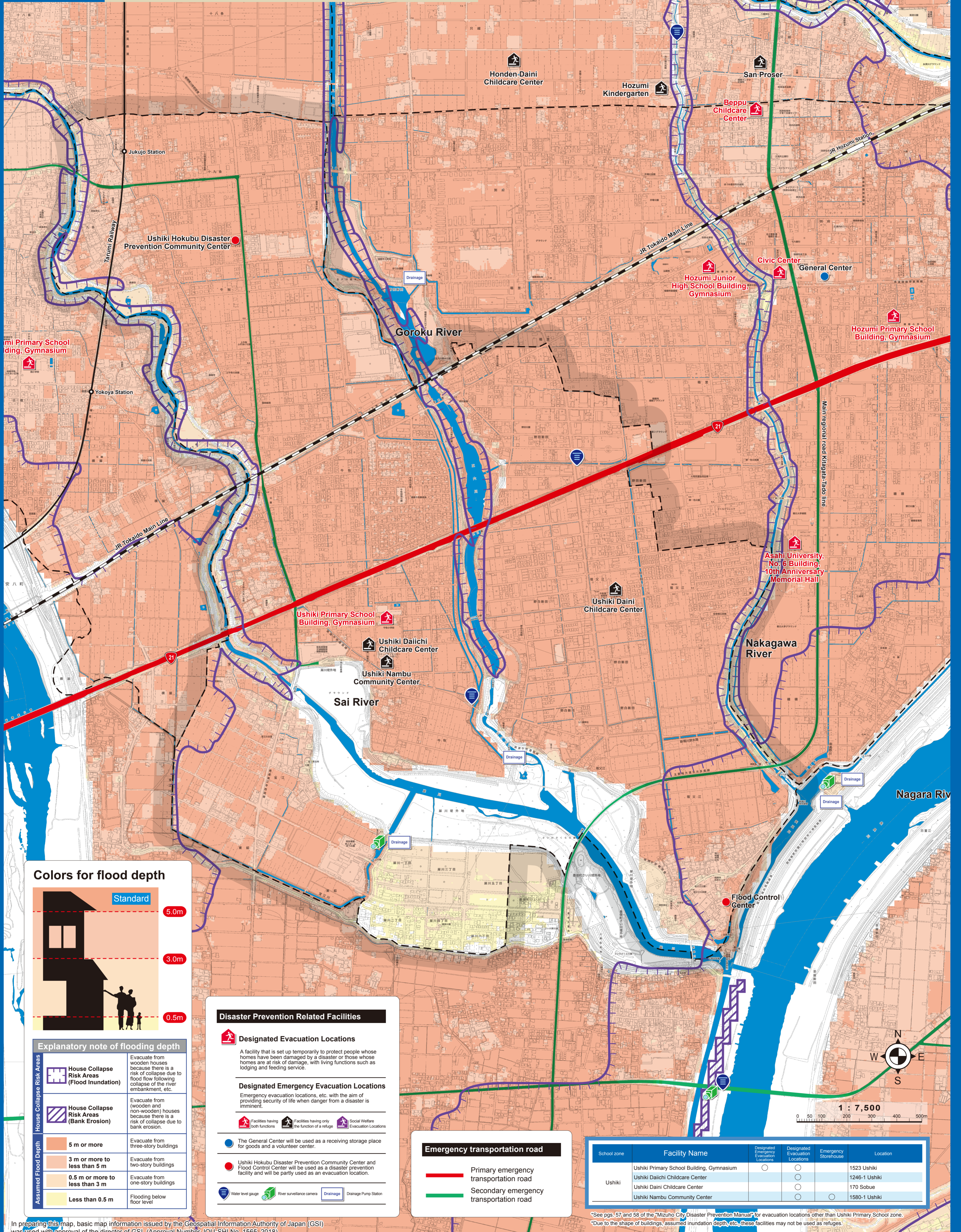


Ushiki Primary School zone

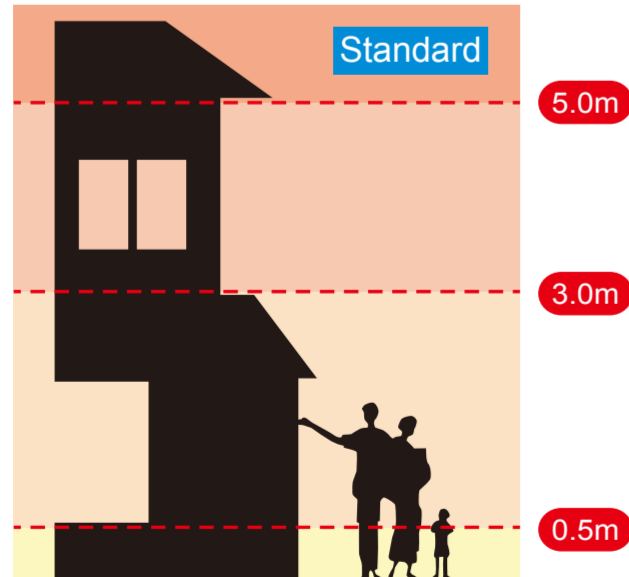
Mizuho City Hazard Map

Flood

This map displays flood inundation risk areas and inundation depth when each river overflows due to the largest scale heavy rain which occurs about once every 1,000 years. As for inundation depth, all flood inundation risk area maps (assumed largest scale) of each river were superposed, and the largest value of inundation depth was adopted.



Colors for flood depth



Explanatory note of flooding depth	
	Evacuate from wooden houses because there is a risk of collapse due to flood flow following collapse of the river embankment, etc.
	Evacuate from (wooden and non-wooden) houses because there is a risk of collapse due to bank erosion.
	Evacuate from three-story buildings
	Evacuate from two-story buildings
	Evacuate from one-story buildings
	Flooding below floor level

Disaster Prevention Related Facilities

- Designated Evacuation Locations**
A facility that is set up temporarily to protect people whose homes have been damaged by a disaster or those whose homes are at risk of damage, with living functions such as lodging and feeding service.
- Designated Emergency Evacuation Locations**
Emergency evacuation locations, etc. with the aim of providing security of life when danger from a disaster is imminent.
- Facilities having both functions
- Facilities having only the function of a refuge
- Social Welfare Evaluation Locations
- The General Center will be used as a receiving storage place for goods and a volunteer center.
- Ushiki Hokubu Disaster Prevention Community Center and Flood Control Center will be used as a disaster prevention facility and will be partly used as an evacuation location.
- Water level gauge
- River surveillance camera
- Drainage
- Drainage Pump Station

Emergency transportation road

- Primary emergency transportation road
- Secondary emergency transportation road

School zone	Facility Name	Designated Emergency Evacuation Locations	Designated Evacuation Locations	Emergency Storehouse	Location
Ushiki	Ushiki Primary School Building, Gymnasium	○	○		1523 Ushiki
	Ushiki Daiichi Childcare Center		○		1246-1 Ushiki
	Ushiki Daini Childcare Center		○		170 Sobue
	Ushiki Nambu Community Center		○	○	1580-1 Ushiki

*See pgs. 57 and 58 of the "Mizuho City Disaster Prevention Manual" for evacuation locations other than Ushiki Primary School zone.
*Due to the shape of buildings, assumed inundation depth, etc., these facilities may not be used as refuges.

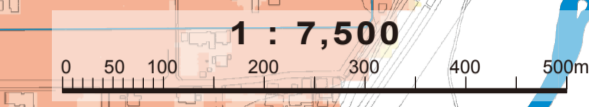


Flood

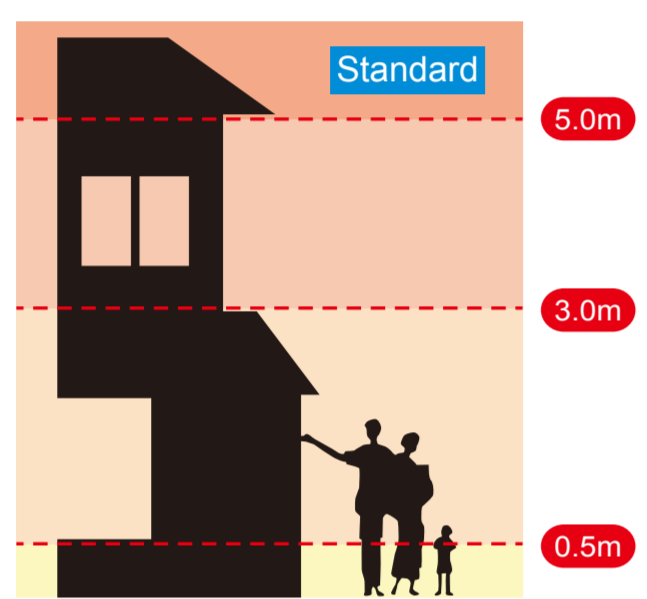
This map displays flood inundation risk areas and inundation depth when each river overflows due to the largest scale heavy rain which occurs about once every 1,000 years. As for inundation depth, all flood inundation risk area maps (assumed largest scale) of each river were superposed, and the largest value of inundation depth was adopted.

School zone	Facility Name	Designated Emergency Evacuation Locations	Designated Evacuation Locations	Emergency Storehouse	Location
Namazu	Namazu Primary School Building, Gymnasium	○	○	○	2-108 Babajoko-machi

*See pgs. 57 and 58 of the "Mizuho City Disaster Prevention Manual" for evacuation locations other than Namazu Primary School zone.
 *Due to the shape of buildings, assumed inundation depth, etc., these facilities may not be used as refuges.



Colors for flood depth



Explanatory note of flooding depth

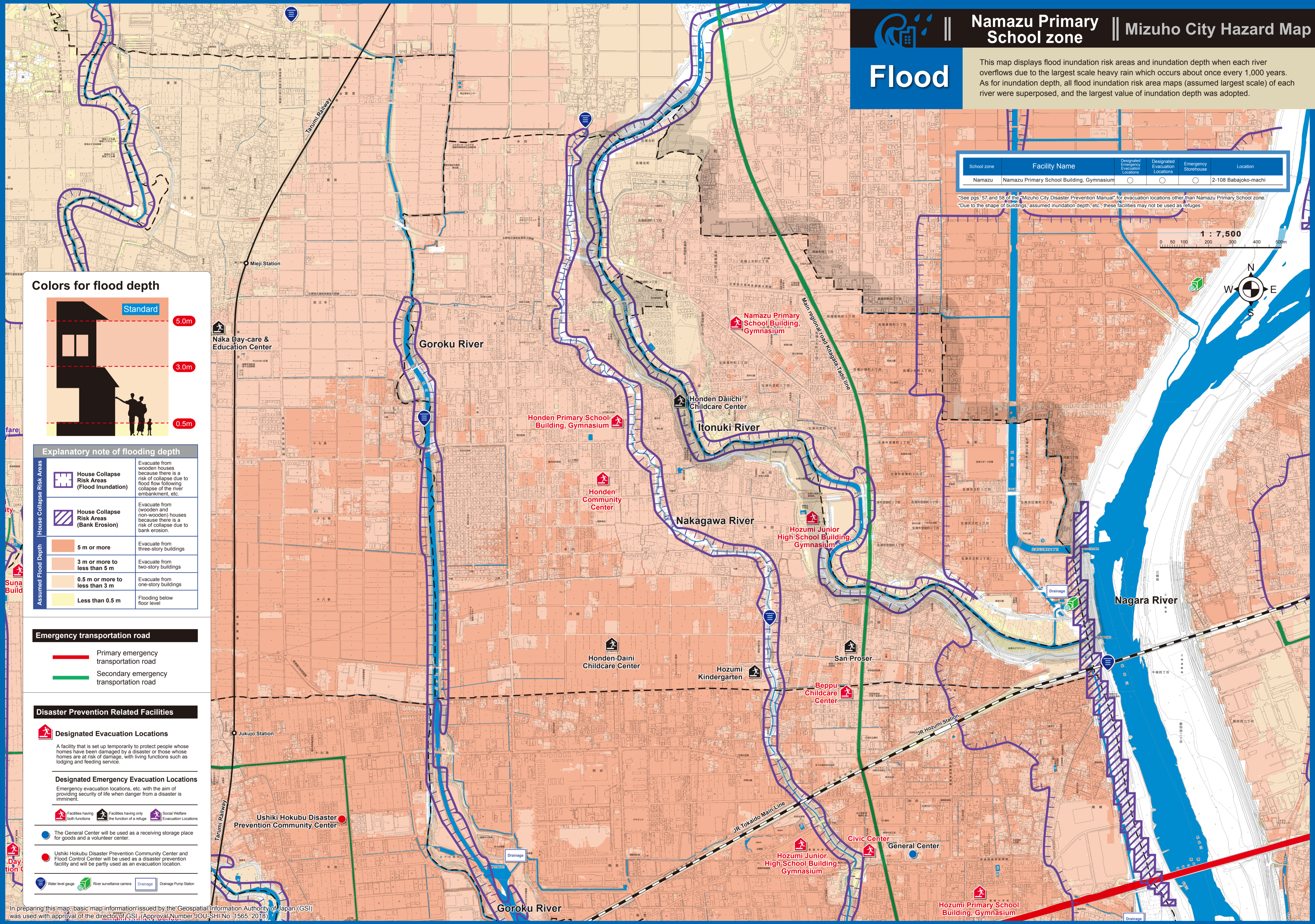
House Collapse Risk Areas (Flood Inundation)	House Collapse Risk Areas (Bank Erosion)	Assumed Flood Depth	Evacuation instructions
[Red hatched box]	[Blue hatched box]	5 m or more	Evacuate from three-story buildings
[Orange hatched box]	[Orange hatched box]	3 m or more to less than 5 m	Evacuate from two-story buildings
[Yellow hatched box]	[Yellow hatched box]	0.5 m or more to less than 3 m	Evacuate from one-story buildings
[White box]	[White box]	Less than 0.5 m	Flooding below floor level

Emergency transportation road

[Red line]	Primary emergency transportation road
[Green line]	Secondary emergency transportation road

Disaster Prevention Related Facilities

[Red house icon]	Designated Evacuation Locations A facility that is set up temporarily to protect people whose homes have been damaged by a disaster or whose homes are at risk of damage, with living functions such as lodging and feeding service.
[Red house icon]	Designated Emergency Evacuation Locations Emergency evacuation locations, etc. with the aim of providing security of life when danger from a disaster is imminent.
[Red house icon]	Facilities having both functions
[Green house icon]	Facilities having only the function of a refuge
[Purple house icon]	Social Welfare Evacuation Locations
[Blue circle icon]	The General Center will be used as a receiving storage place for goods and a volunteer center.
[Red circle icon]	Ushiki Hokubu Disaster Prevention Community Center and Flood Control Center will be used as a disaster prevention facility and will be partly used as an evacuation location.
[Blue circle icon]	Water level gauge
[Green camera icon]	River surveillance camera
[Blue square icon]	Drainage
[Blue square icon]	Drainage Pump Station



In preparing this map, basic map information issued by the Geospatial Information Authority of Japan (GSI) was used with approval of the director of GSI. (Approval Number JOU-SHI No. 1565, 2018)



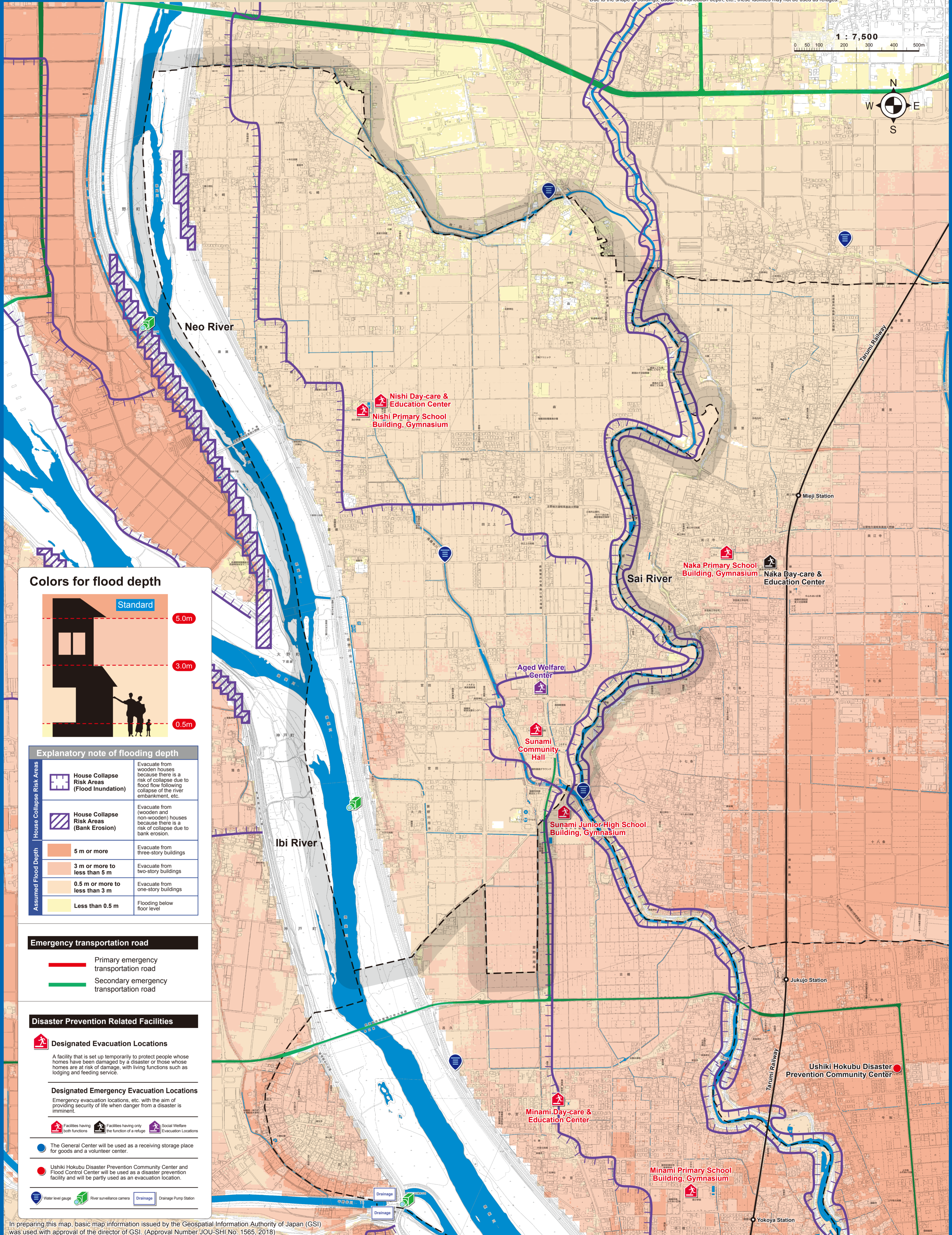
Flood

This map displays flood inundation risk areas and inundation depth when each river overflows due to the largest scale heavy rain which occurs about once every 1,000 years. As for inundation depth, all flood inundation risk area maps (assumed largest scale) of each river were superposed, and the largest value of inundation depth was adopted.

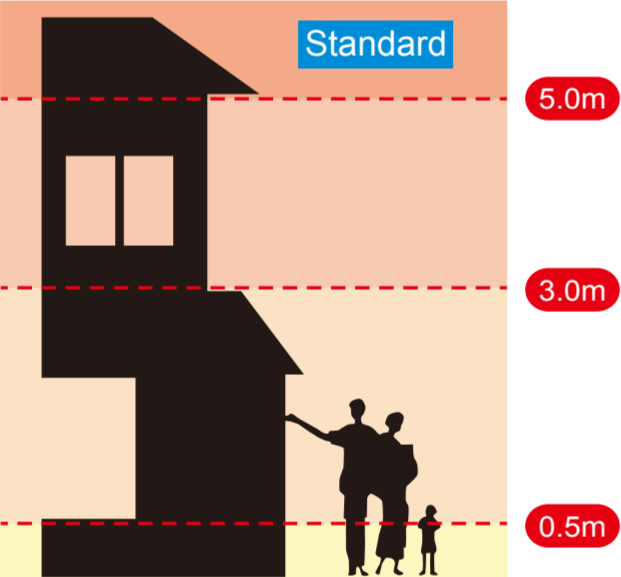
School zone	Facility Name	Designated Emergency Evacuation Locations	Designated Evacuation Locations	Emergency Storehouse	Location
Nishi	Nishi Primary School Building, Gymnasium	○	○	○	389 Ikura
	Nishi Day-care & Education Center	○	○	○	177-1 Ikura
	Sunami Community Hall	○	○	○	300-1 Miyaden
	Aged Welfare Center	○	○	○	597 Tanokami

*See pgs. 57 and 58 of the "Mizuho City Disaster Prevention Manual" for evacuation locations other than Nishi Primary School zone.
 *Due to the shape of buildings, assumed inundation depth, etc., these facilities may not be used as refuges.

1 : 7,500
 0 50 100 200 300 400 500m



Colors for flood depth



Explanatory note of flooding depth

	House Collapse Risk Areas (Flood Inundation)	Evacuate from wooden houses because there is a risk of collapse due to flood flow following collapse of the river embankment, etc.
	House Collapse Risk Areas (Bank Erosion)	Evacuate from (wooden and non-wooden) houses because there is a risk of collapse due to bank erosion.
	5 m or more	Evacuate from three-story buildings
	3 m or more to less than 5 m	Evacuate from two-story buildings
	0.5 m or more to less than 3 m	Evacuate from one-story buildings
	Less than 0.5 m	Flooding below floor level

Emergency transportation road

- Primary emergency transportation road
- Secondary emergency transportation road

Disaster Prevention Related Facilities

- Designated Evacuation Locations
A facility that is set up temporarily to protect people whose homes have been damaged by a disaster or those whose homes are at risk of damage, with living functions such as lodging and feeding service.
- Designated Emergency Evacuation Locations
Emergency evacuation locations, etc. with the aim of providing security of life when danger from a disaster is imminent.
- Facilities having both functions
- Facilities having only the function of a refuge
- Social Welfare Evacuation Locations
- The General Center will be used as a receiving storage place for goods and a volunteer center.
- Ushiki Hokubu Disaster Prevention Community Center and Flood Control Center will be used as a disaster prevention facility and will be partly used as an evacuation location.
- Water level gauge
- River surveillance camera
- Drainage
- Drainage Pump Station

In preparing this map, basic map information issued by the Geospatial Information Authority of Japan (GSI) was used with approval of the director of GSI. (Approval Number JOU-SHI.No. 1565, 2018)



Naka Primary School zone

Mizuho City Hazard Map

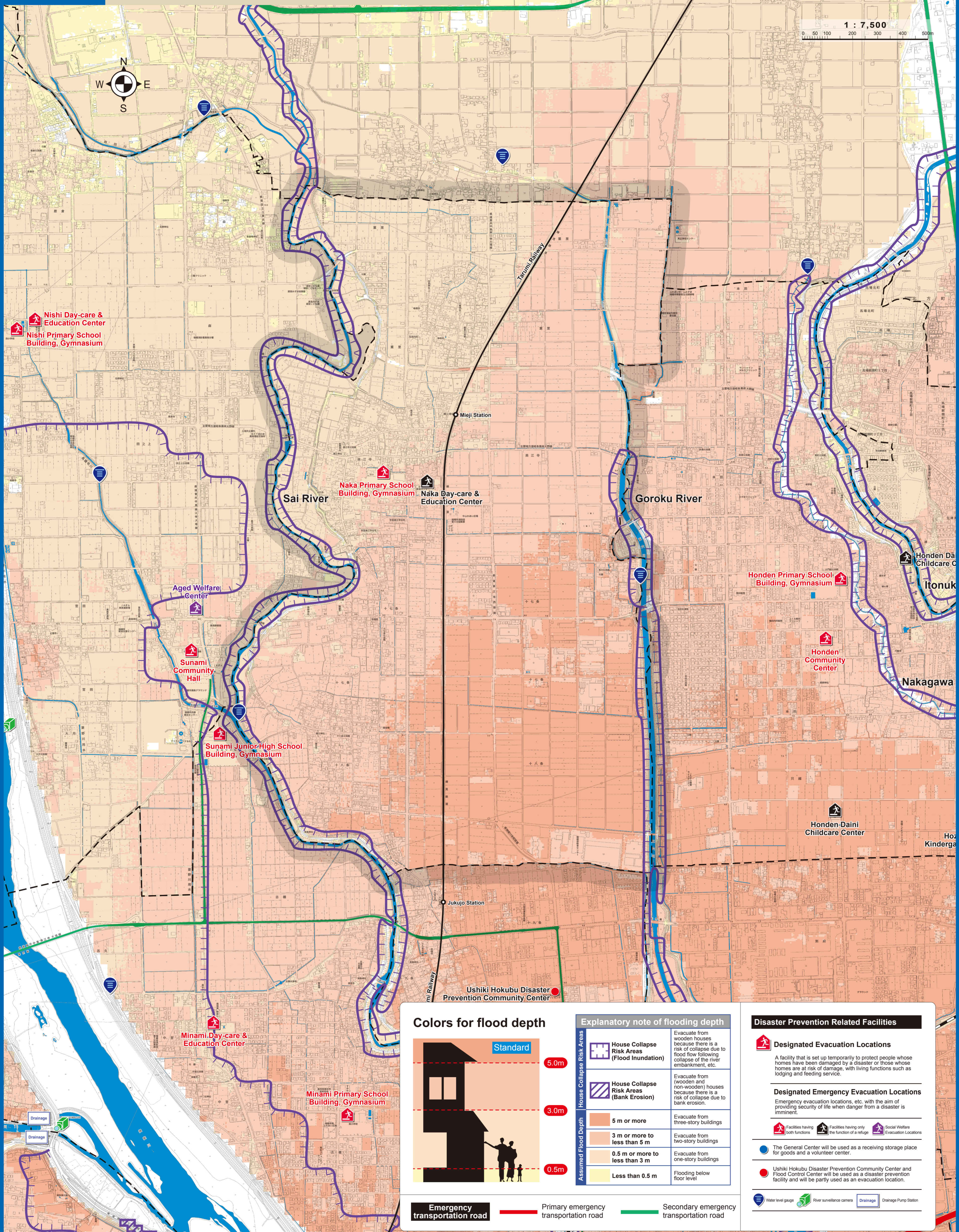
Flood

This map displays flood inundation risk areas and inundation depth when each river overflows due to the largest scale heavy rain which occurs about once every 1,000 years. As for inundation depth, all flood inundation risk area maps (assumed largest scale) of each river were superposed, and the largest value of inundation depth was adopted.

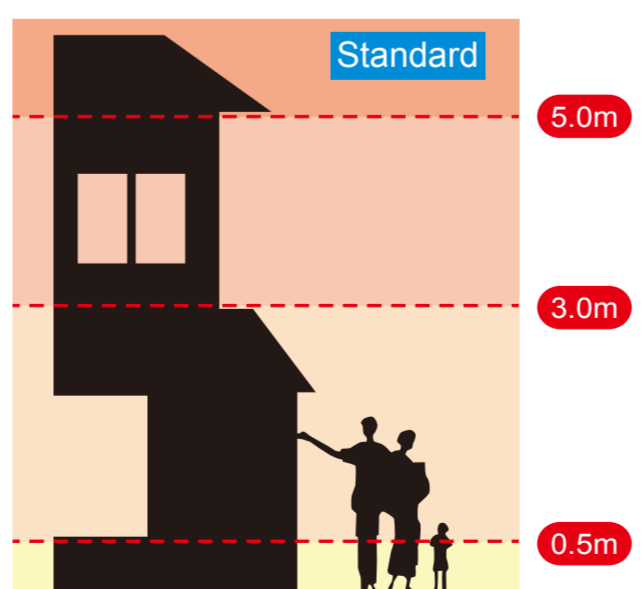
School zone	Facility Name	Designated Emergency Evacuation Locations	Designated Evacuation Locations	Emergency Storehouse	Location
Naka	Naka Primary School Building, Gymnasium	○	○	○	173 Mieji
	Naka Day-care & Education Center	○	○	○	223 Mieji

*See pgs. 57 and 58 of the "Mizuho City Disaster Prevention Manual" for evacuation locations other than Naka Primary School zone.
*Due to the shape of buildings, assumed inundation depth, etc., these facilities may not be used as refuges.

1 : 7,500



Colors for flood depth



House Collapse Risk Areas	Assumed Flood Depth	Evacuation Note
House Collapse Risk Areas (Flood Inundation)	5 m or more	Evacuate from three-story buildings
House Collapse Risk Areas (Bank Erosion)	3 m or more less than 5 m	Evacuate from two-story buildings
	0.5 m or more less than 3 m	Evacuate from one-story buildings
	Less than 0.5 m	Flooding below floor level

Disaster Prevention Related Facilities

- Designated Evacuation Locations**
A facility that is set up temporarily to protect people whose homes have been damaged by a disaster or those whose homes are at risk of damage, with living functions such as lodging and feeding service.
- Designated Emergency Evacuation Locations**
Emergency evacuation locations, etc. with the aim of providing security of life when danger from a disaster is imminent.
- Water level gauge
- River surveillance camera
- Drainage Pump Station

- Emergency transportation road
- Primary emergency transportation road
- Secondary emergency transportation road

In preparing this map, basic map information issued by the Geospatial Information Authority of Japan (GSI) was used with approval of the director of GSI (Approval Number JOU-SHI No. 1565, 2018)

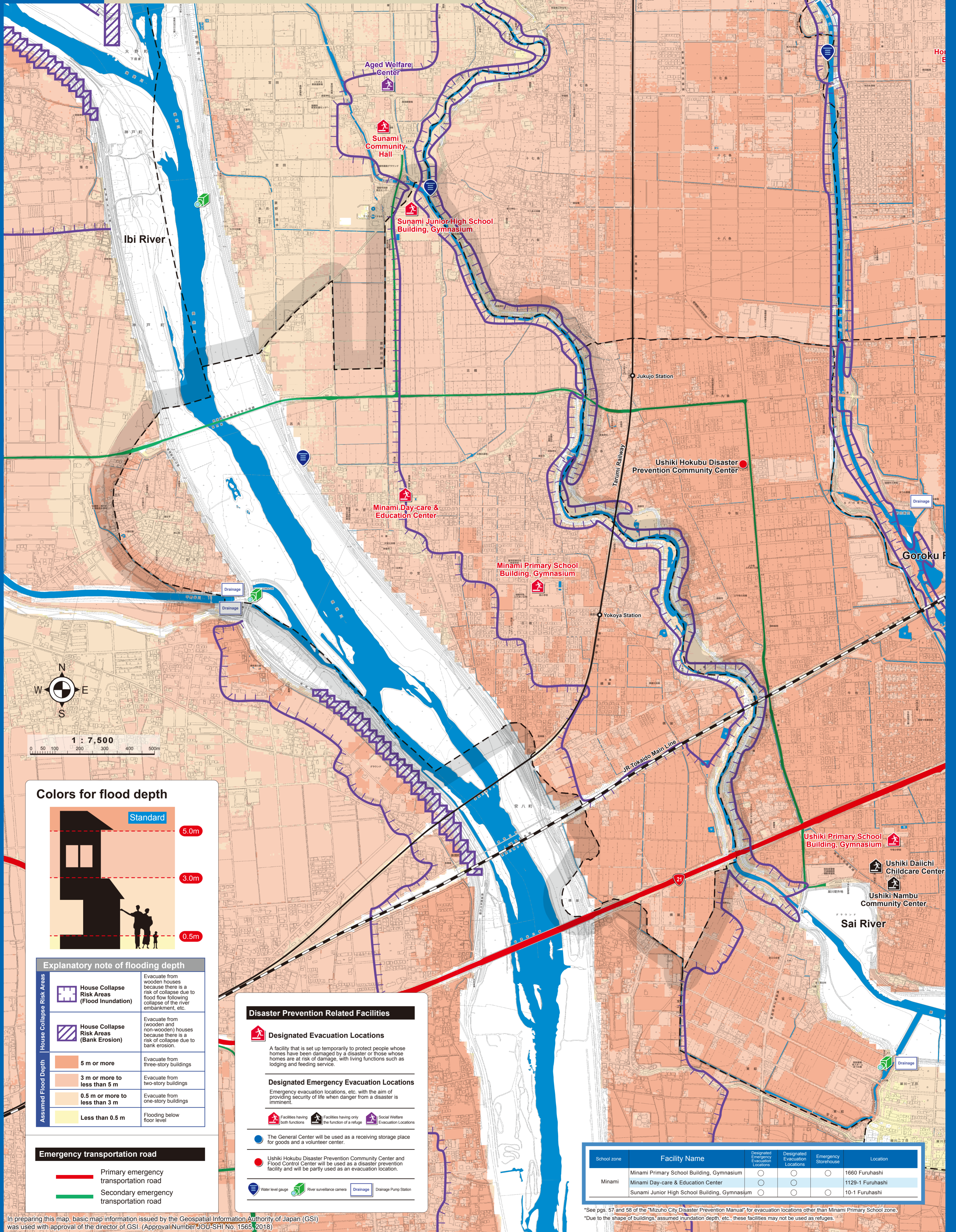


Minami Primary School zone

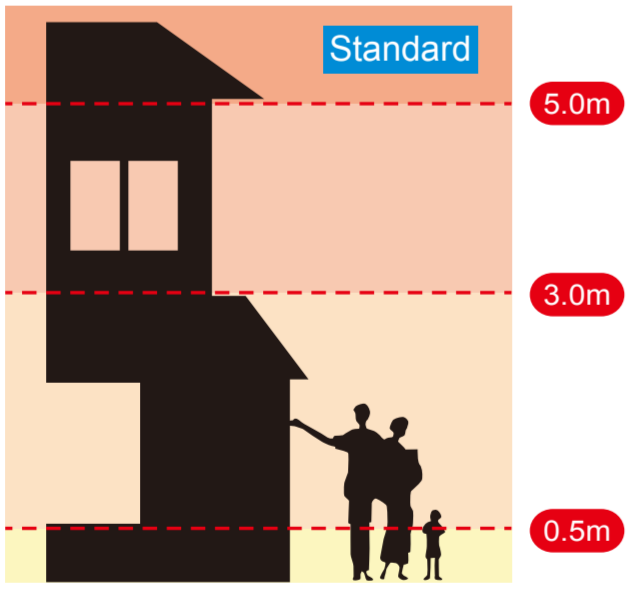
Mizuho City Hazard Map

Flood

This map displays flood inundation risk areas and inundation depth when each river overflows due to the largest scale heavy rain which occurs about once every 1,000 years. As for inundation depth, all flood inundation risk area maps (assumed largest scale) of each river were superposed, and the largest value of inundation depth was adopted.



Colors for flood depth



Explanatory note of flooding depth	
	Evacuate from wooden houses because there is a risk of collapse due to flood flow following collapse of the river embankment, etc.
	Evacuate from (wooden and non-wooden) houses because there is a risk of collapse due to bank erosion.
	Evacuate from three-story buildings
	Evacuate from two-story buildings
	Evacuate from one-story buildings
	Flooding below floor level

Emergency transportation road	
	Primary emergency transportation road
	Secondary emergency transportation road

Disaster Prevention Related Facilities

- Designated Evacuation Locations**
A facility that is set up temporarily to protect people whose homes have been damaged by a disaster or those whose homes are at risk of damage, with living functions such as lodging and feeding service.
- Designated Emergency Evacuation Locations**
Emergency evacuation locations, etc. with the aim of providing security of life when danger from a disaster is imminent.
- Facilities having both the function of a refuge and Evacuation Locations
- Social Welfare Evacuation Locations
- The General Center will be used as a receiving storage place for goods and a volunteer center.
- Ushiki Hokubu Disaster Prevention Community Center and Flood Control Center will be used as a disaster prevention facility and will be partly used as an evacuation location.
- Water level gauge
- River surveillance camera
- Drainage
- Drainage Pump Station

School zone	Facility Name	Designated Emergency Evacuation Locations	Designated Evacuation Locations	Emergency Storehouse	Location
Minami	Minami Primary School Building, Gymnasium	○	○	○	1660 Furuhashi
	Minami Day-care & Education Center	○	○	○	1129-1 Furuhashi
	Sunami Junior High School Building, Gymnasium	○	○	○	10-1 Furuhashi

*See pgs. 57 and 58 of the "Mizuho City Disaster Prevention Manual" for evacuation locations other than Minami Primary School zone.
*Due to the shape of buildings, assumed inundation depth, etc., these facilities may not be used as refuges.



Hozumi Primary School zone

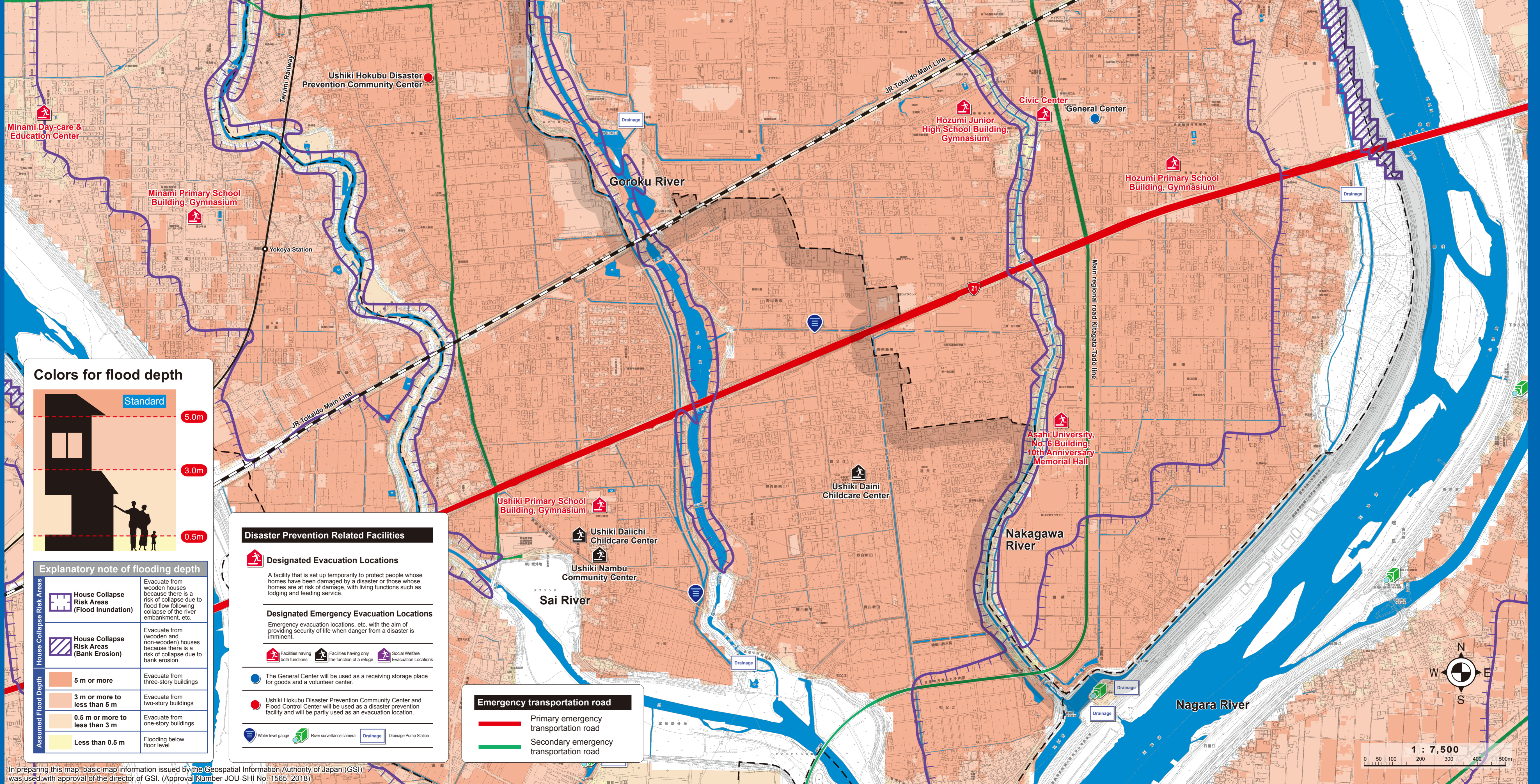
Mizuho City Hazard Map

Flood

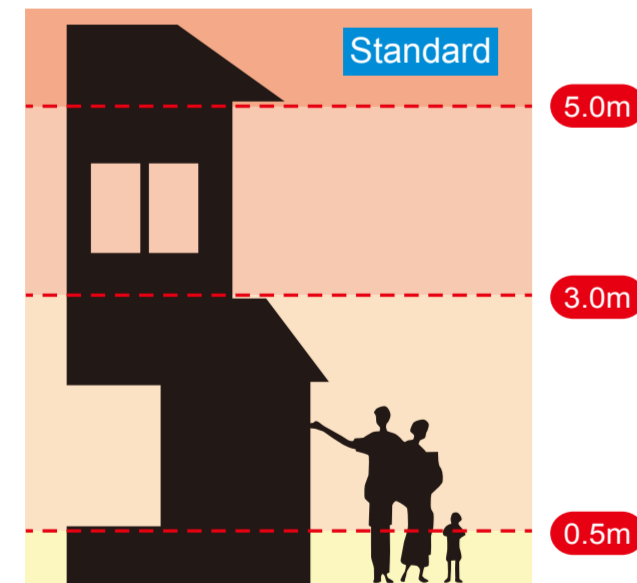
This map displays flood inundation risk areas and inundation depth when each river overflows due to the largest scale heavy rain which occurs about once every 1,000 years. As for inundation depth, all flood inundation risk area maps (assumed largest scale) of each river were superposed, and the largest value of inundation depth was adopted.

School zone	Facility Name	Designated Emergency Evacuation Locations	Designated Evacuation Locations	Emergency Storehouse	Location
Hozumi	Hozumi Primary School Building, Gymnasium	○	○	○	452 Hozumi
	Hozumi Junior High School Building, Gymnasium	○	○	○	1888 Beppu
	Asahi University, No. 6 Building, 10th Anniversary Memorial Hall	○	○	○	1851 Hozumi
	Beppu Childcare Center	○	○	○	144-1 Beppu
	Civic Center	○	○	○	1300-3 Beppu

*See pgs. 57 and 58 of the "Mizuho City Disaster Prevention Manual" for evacuation locations other than Hozumi Primary School zone.
 *Due to the shape of buildings, assumed inundation depth, etc., these facilities may not be used as refuges.



Colors for flood depth



Explanatory note of flooding depth

Assumed Flood Depth	House Collapse Risk Areas	Evacuation instructions
5 m or more	House Collapse Risk Areas (Flood Inundation)	Evacuate from wooden houses because there is a risk of collapse due to flood flow following collapse of the river embankment, etc.
3 m or more to less than 5 m	House Collapse Risk Areas (Bank Erosion)	Evacuate from (wooden and non-wooden) houses because there is a risk of collapse due to bank erosion.
0.5 m or more to less than 3 m		Evacuate from three-story buildings
		Evacuate from two-story buildings
		Evacuate from one-story buildings
Less than 0.5 m		Flooding below floor level

Disaster Prevention Related Facilities

- Designated Evacuation Locations**
A facility that is set up temporarily to protect people whose homes have been damaged by a disaster or those whose homes are at risk of damage, with living functions such as lodging and feeding service.
- Designated Emergency Evacuation Locations**
Emergency evacuation locations, etc. with the aim of providing security of life when danger from a disaster is imminent.
- Facilities having both functions: (Red house icon)
- Facilities having only the function of a refuge: (Blue house icon)
- Social Welfare Evacuation Locations: (Purple house icon)
- The General Center will be used as a receiving storage place for goods and a volunteer center. (Blue circle icon)
- Ushiki Hokubu Disaster Prevention Community Center and Flood Control Center will be used as a disaster prevention facility and will be partly used as an evacuation location. (Red circle icon)
- Water level gauge: (Blue circle icon)
- River surveillance camera: (Green camera icon)
- Drainage: (Blue square icon)
- Drainage Pump Station: (Blue square icon)

Emergency transportation road

- Primary emergency transportation road (Red line)
- Secondary emergency transportation road (Green line)

In preparing this map, basic map information issued by the Geospatial Information Authority of Japan (GSI) was used with approval of the director of GSI. (Approval Number JOU-SHI No. 1565, 2018)



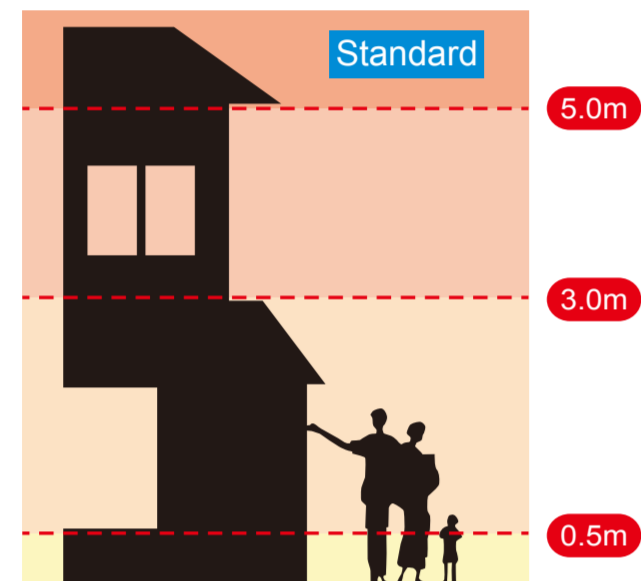
Flood

This map displays flood inundation risk areas and inundation depth when each river overflows due to the largest scale heavy rain which occurs about once every 1,000 years. As for inundation depth, all flood inundation risk area maps (assumed largest scale) of each river were superposed, and the largest value of inundation depth was adopted.

School zone	Facility Name	Designated Emergency Evacuation Locations	Designated Evacuation Locations	Emergency Storehouse	Location
Honden	Honden Primary School Building, Gymnasium	○	○	○	938 Honden
	Hozumi Junior High School Building, Gymnasium	○	○	○	2000 Honden
	Honden Daiichi Childcare Center	○	○	○	1915 Honden
	Honden Daini Childcare Center	○	○	○	387 Tadakoshi
	Hozumi Kindergarten	○	○	○	500 Tadakoshi
	Honden Community Center	○	○	○	977-1 Honden
	San Proser	○	○	Private	1061 Tadakoshi

*See pgs. 57 and 58 of the "Mizuho City Disaster Prevention Manual" for evacuation locations other than Honden Primary School zone.
*Due to the shape of buildings, assumed inundation depth, etc., these facilities may not be used as refuges.

Colors for flood depth



Explanatory note of flooding depth

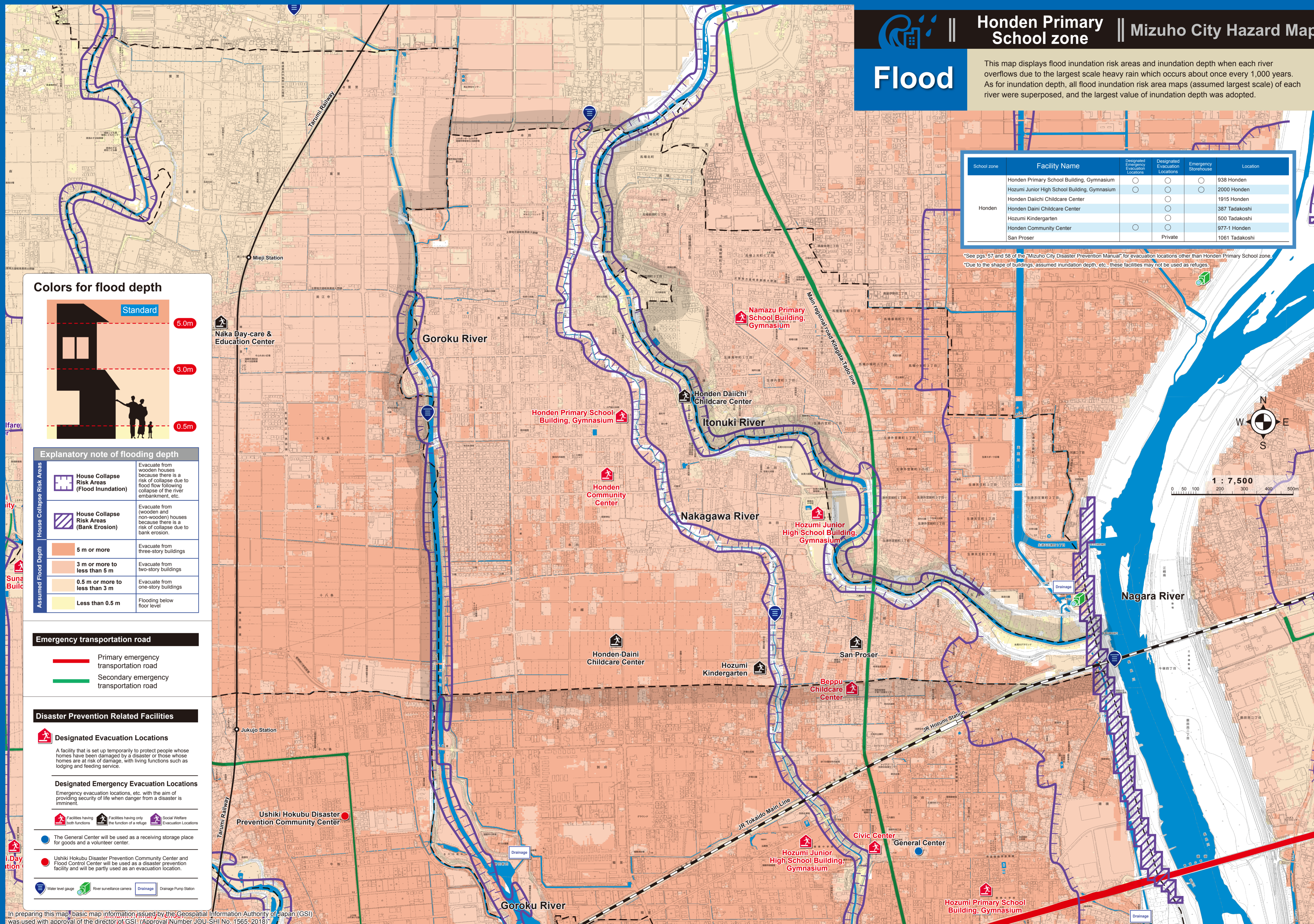
House Collapse Risk Areas (Flood Inundation)	House Collapse Risk Areas (Bank Erosion)	Assumed Flood Depth	Evacuation instructions
		5 m or more	Evacuate from three-story buildings
		3 m or more to less than 5 m	Evacuate from two-story buildings
		0.5 m or more to less than 3 m	Evacuate from one-story buildings
		Less than 0.5 m	Flooding below floor level

Emergency transportation road

- Primary emergency transportation road
- Secondary emergency transportation road

Disaster Prevention Related Facilities

- Designated Evacuation Locations
A facility that is set up temporarily to protect people whose homes have been damaged by a disaster or those whose homes are at risk of damage, with living functions such as lodging and feeding service.
- Designated Emergency Evacuation Locations
Emergency evacuation locations, etc. with the aim of providing security of life when danger from a disaster is imminent.
- Facilities having both functions
- Facilities having only the function of a refuge
- Social Welfare Evacuation Locations
- The General Center will be used as a receiving storage place for goods and a volunteer center.
- Ushiki Hokubu Disaster Prevention Community Center and Flood Control Center will be used as a disaster prevention facility and will be partly used as an evacuation location.
- Water level gauge
- River surveillance camera
- Drainage
- Drainage Pump Station



In preparing this map, basic map information issued by the Geospatial Information Authority of Japan (GSI) was used with approval of the director of GSI. (Approval Number JOU-SHI No. 1565, 2018)