

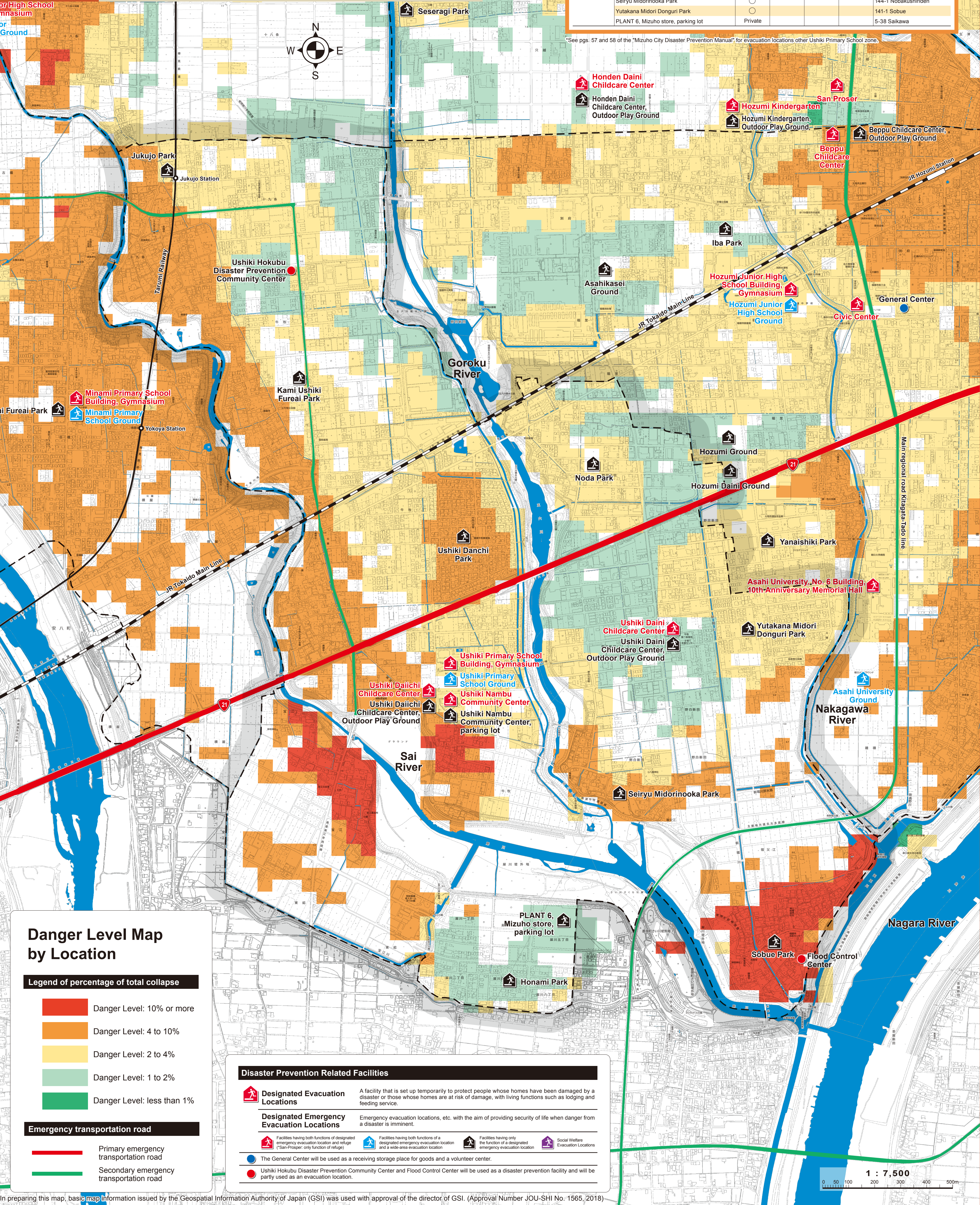


# Ushiki Primary School zone

# Mizuho City Hazard Map

## Earthquake

The Danger Level Map by Location shows the distribution of building damage caused by earthquake shaking and liquefaction. Specifically, the degree to which the building is damaged is represented as the "percentage of total collapse", when earthquake shaking reaches the strength shown in the Map of Predicted Intensity by Region. This "percentage of total collapse" indicates how many buildings are expected to be totally destroyed in each divided area of the city, using 50-m mesh topographical data. The higher the value of the "percentage of total collapse", the larger the damage to buildings in that area. The risk of collapse of buildings depends on the year the house was built (especially before 1981), the structure and other conditions of the construction. If there is significant shaking or damage to the location of your home, prepare well for earthquakes from day to day by giving priority to such measures as securing furniture, receiving a seismic diagnosis and making antiseismic reinforcement.



School zone	Facility Name	Designated Emergency Evacuation Locations	Designated Evacuation Locations	Wide-area Evacuation Locations	Emergency Storehouse	Location
Ushiki	Ushiki Primary School Building, Gymnasium	○		○		1523 Ushiki
	Ushiki Primary School Ground	○	○			1523 Ushiki
	Ushiki Daiichi Childcare Center	○		○		1246-1 Ushiki
	Ushiki Daiichi Childcare Center, Outdoor Play Ground	○				1246-1 Ushiki
	Ushiki Daini Childcare Center	○		○		170 Sobue
	Ushiki Daini Childcare Center, Outdoor Play Ground	○				170 Sobue
	Ushiki Nambu Community Center	○		○	○	1580-1 Ushiki
	Ushiki Nambu Community Center, parking lot	○				1580-1 Ushiki
	Honami Park	○				4-27 Saikawa
	Ushiki Danchi Park	○				1293-99 Ushiki
	Sobue Park	○				1143-5 Sobue
	Jukujo Park	○				37-1 Jukujo
	Kami Ushiki Fureai Park	○				611-1, 612-1, 613-1 Ushiki
	Noda Park	○				4025 Nodashinden
	Seiryu Midorinooka Park	○				144-1 Nobakushinden
	Yutakana Midori Donguri Park	○				141-1 Sobue
	PLANT 6, Mizuho store, parking lot	Private				5-38 Saikawa

\*See pgs. 57 and 58 of the "Mizuho City Disaster Prevention Manual" for evacuation locations other Ushiki Primary School zone.

### Danger Level Map by Location

- Legend of percentage of total collapse
- Danger Level: 10% or more
  - Danger Level: 4 to 10%
  - Danger Level: 2 to 4%
  - Danger Level: 1 to 2%
  - Danger Level: less than 1%

- Emergency transportation road
- Primary emergency transportation road
  - Secondary emergency transportation road

#### Disaster Prevention Related Facilities

- Designated Evacuation Locations** A facility that is set up temporarily to protect people whose homes have been damaged by a disaster or those whose homes are at risk of damage, with living functions such as lodging and feeding service.
- Designated Emergency Evacuation Locations** Emergency evacuation locations, etc. with the aim of providing security of life when danger from a disaster is imminent.
- Facilities having both functions of designated emergency evacuation location and refuge (San Proser: only function of refuge)
  - Facilities having both functions of a designated emergency evacuation location and a wide-area evacuation location
  - Facilities having only the function of a designated emergency evacuation location
  - Social Welfare Evacuation Locations
  - The General Center will be used as a receiving storage place for goods and a volunteer center.
  - Ushiki Hokubu Disaster Prevention Community Center and Flood Control Center will be used as a disaster prevention facility and will be partly used as an evacuation location.





## Namazu Primary School zone

## Mizuho City Hazard Map

# Earthquake

The Danger Level Map by Location shows the distribution of building damage caused by earthquake shaking and liquefaction. Specifically, the degree to which the building is damaged is represented as the "percentage of total collapse", when earthquake shaking reaches the strength shown in the Map of Predicted Intensity by Region. This "percentage of total collapse" indicates how many buildings are expected to be totally destroyed in each divided area of the city, using 50-m mesh topographical data. The higher the value of the "percentage of total collapse", the larger the damage to buildings in that area.

The risk of collapse of buildings depends on the year the house was built (especially before 1981), the structure and other conditions of the construction. If there is significant shaking or damage to the location of your home, prepare well for earthquakes from day to day by giving priority to such measures as securing furniture, receiving a seismic diagnosis and making antiseismic reinforcement.

## Danger Level Map by Location

### Legend of percentage of total collapse

- Danger Level: 10% or more
- Danger Level: 4 to 10%
- Danger Level: 2 to 4%
- Danger Level: 1 to 2%
- Danger Level: less than 1%

### Disaster Prevention Related Facilities

#### Designated Evacuation Locations

A facility that is set up temporarily to protect people whose homes have been damaged by a disaster or those whose homes are at risk of damage, with living functions such as lodging and feeding service.

#### Designated Emergency Evacuation Locations

- Emergency evacuation locations, etc. with the aim of providing security of life when danger from a disaster is imminent.
- Facilities having both functions of designated emergency evacuation location and refuge ("San-Proseer": only function of refuge)
- Facilities having both functions of a designated emergency evacuation location and a wide-area evacuation location
- Facilities having only the function of a designated emergency evacuation location
- Social Welfare Evacuation Locations

The General Center will be used as a receiving storage place for goods and a volunteer center.

Ushiki Hokuho Disaster Prevention Community Center and Flood Control Center will be used as a disaster prevention facility and will be partly used as an evacuation location.

### Emergency transportation road

- Primary emergency transportation road
- Secondary emergency transportation road

School zone	Facility Name	Designated Emergency Evacuation Locations	Designated Evacuation Locations	Wide-area Evacuation Locations	Emergency Storehouse	Location
Namazu	Namazu Primary School Building, Gymnasium	○			○	2-108 Babajoko-machi
	Namazu Primary School Ground	○	○			2-108 Babajoko-machi
	Maehata Park	○				2-169 Babamaetamachi
	Joko Park	○				1-141 Babajoko-machi
	Baba Park	○				2-107 Babajoko-machi
	Takamichi Park	○				1-122 Babakoshiro-machi
	Namazu Sports Playground	○				223-1 Namazu
	Takitsubo Park	○				1-123 Namazu Takitsubomachi
	Hikouchi Park	○				2-87 Namazugumae-machi
	Makomogaik Park	○				1-97 Namazuguhigashi-machi
	Soramachi Park	○				2-70 Namazutenohigashi-machi
	Minaminagare Park	○				2-106 Namazutenomachi

\*See pgs. 57 and 58 of the "Mizuho City Disaster Prevention Manual" for evacuation locations other than Namazu Primary School zone.

In preparing this map, basic map information issued by the Geospatial Information Authority of Japan (GSI) was used with approval of the director of GSI. (Approval Number JOU-SHI No. 1565, 2018)





## Nishi Primary School zone

## Mizuho City Hazard Map

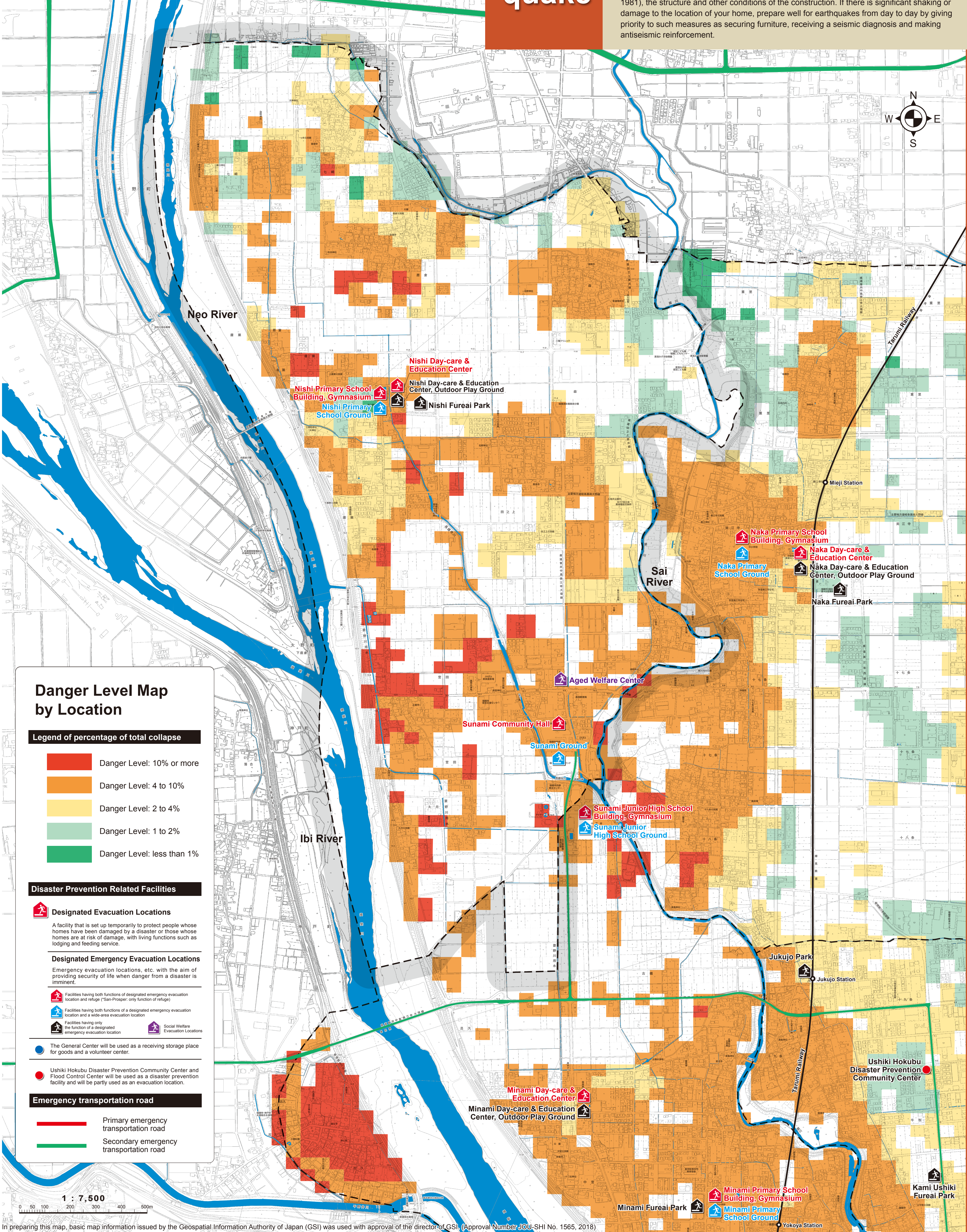
# Earth-quake

The Danger Level Map by Location shows the distribution of building damage caused by earthquake shaking and liquefaction. Specifically, the degree to which the building is damaged is represented as the "percentage of total collapse", when earthquake shaking reaches the strength shown in the Map of Predicted Intensity by Region. This "percentage of total collapse" indicates how many buildings are expected to be totally destroyed in each divided area of the city, using 50-m mesh topographical data. The higher the value of the "percentage of total collapse", the larger the damage to buildings in that area.

The risk of collapse of buildings depends on the year the house was built (especially before 1981), the structure and other conditions of the construction. If there is significant shaking or damage to the location of your home, prepare well for earthquakes from day to day by giving priority to such measures as securing furniture, receiving a seismic diagnosis and making antiseismic reinforcement.

School zone	Facility Name	Designated Emergency Evacuation Locations	Designated Evacuation Locations	Wide-area Evacuation Locations	Emergency Storehouse	Location
Nishi	Nishi Primary School Building, Gymnasium	○			○	389 Ikura
	Nishi Primary School Ground	○	○			389 Ikura
	Nishi Day-care & Education Center	○		○		177-1 Ikura
	Nishi Day-care & Education Center, Outdoor Play Ground	○				177-1 Ikura
	Nishi Fureai Park	○				175 Ikura
	Sunami Community Hall	○		○		300-1 Miyaden
	Sunami Ground	○	○			300-2 Miyaden
	Aged Welfare Center	○		○		597 Tanokami

\*See pgs 57 and 58 of the "Mizuho City Disaster Prevention Manual" for evacuation locations other Nishi Primary School zone.



### Danger Level Map by Location

- Legend of percentage of total collapse
- Danger Level: 10% or more
  - Danger Level: 4 to 10%
  - Danger Level: 2 to 4%
  - Danger Level: 1 to 2%
  - Danger Level: less than 1%

### Disaster Prevention Related Facilities

- Designated Evacuation Locations**
- A facility that is set up temporarily to protect people whose homes have been damaged by a disaster or those whose homes are at risk of damage, with living functions such as lodging and feeding service.
- Designated Emergency Evacuation Locations**
- Emergency evacuation locations, etc. with the aim of providing security of life when danger from a disaster is imminent.
- Facilities having both functions of designated emergency evacuation location and refuge ("San-Prose": only function of refuge)
  - Facilities having both functions of a designated emergency evacuation location and a wide-area evacuation location
  - Facilities having only the function of a designated emergency evacuation location
  - Social Welfare Evacuation Locations
- The General Center will be used as a receiving storage place for goods and a volunteer center.
- Ushiki Hokubu Disaster Prevention Community Center and Flood Control Center will be used as a disaster prevention facility and will be partly used as an evacuation location.

- Emergency transportation road**
- Primary emergency transportation road
  - Secondary emergency transportation road





# Naka Primary School zone

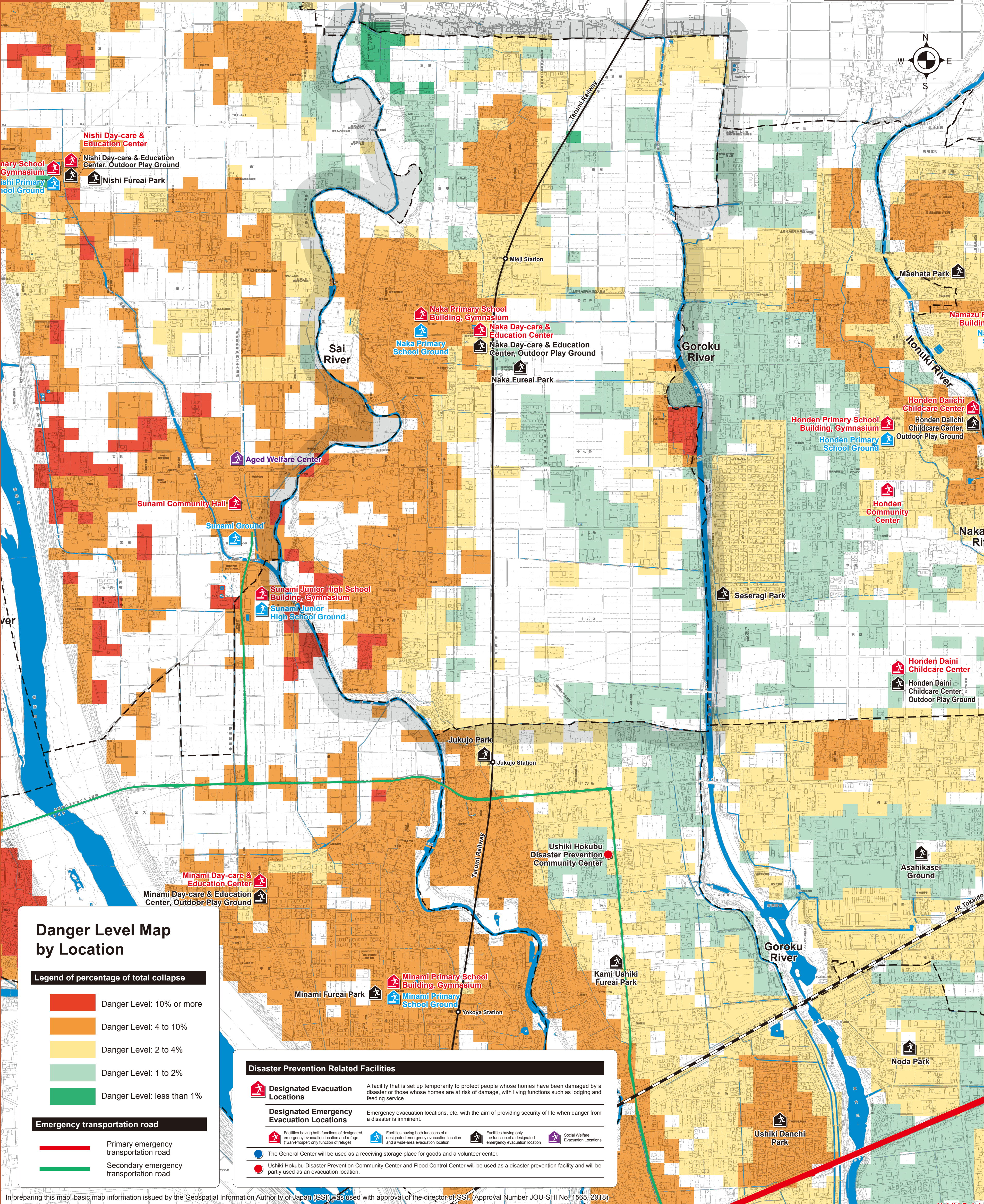
# Mizuho City Hazard Map

## Earthquake

The Danger Level Map by Location shows the distribution of building damage caused by earthquake shaking and liquefaction. Specifically, the degree to which the building is damaged is represented as the "percentage of total collapse", when earthquake shaking reaches the strength shown in the Map of Predicted Intensity by Region. This "percentage of total collapse" indicates how many buildings are expected to be totally destroyed in each divided area of the city, using 50-m mesh topographical data. The higher the value of the "percentage of total collapse", the larger the damage to buildings in that area. The risk of collapse of buildings depends on the year the house was built (especially before 1981), the structure and other conditions of the construction. If there is significant shaking or damage to the location of your home, prepare well for earthquakes from day to day by giving priority to such measures as securing furniture, receiving a seismic diagnosis and making antiseismic reinforcement.

School zone	Facility Name	Designated Emergency Evacuation Locations	Designated Evacuation Locations	Wide-area Evacuation Locations	Emergency Storehouse	Location
Naka	Naka Primary School Building, Gymnasium	○			○	173 Mieji
	Naka Primary School Ground	○	○			173 Mieji
	Naka Day-care & Education Center			○		223 Mieji
	Naka Day-care & Education Center, Outdoor Play Ground	○				223 Mieji
	Naka Fureai Park	○				276 Mieji

\*See pgs. 57 and 58 of the "Mizuho City Disaster Prevention Manual" for evacuation locations other Naka Primary School zone.



### Danger Level Map by Location

#### Legend of percentage of total collapse

- Danger Level: 10% or more
- Danger Level: 4 to 10%
- Danger Level: 2 to 4%
- Danger Level: 1 to 2%
- Danger Level: less than 1%

#### Emergency transportation road

- Primary emergency transportation road
- Secondary emergency transportation road

#### Disaster Prevention Related Facilities

- Designated Evacuation Locations**  
A facility that is set up temporarily to protect people whose homes have been damaged by a disaster or those whose homes are at risk of damage, with living functions such as lodging and feeding service.
- Designated Emergency Evacuation Locations**  
Emergency evacuation locations, etc. with the aim of providing security of life when danger from a disaster is imminent.
- Facilities having both functions of designated emergency evacuation location and refuge ("San-Proper": only function of refuge)
- Facilities having both functions of a designated emergency evacuation location and a wide-area evacuation location
- Facilities having only the function of a designated emergency evacuation location
- Social Welfare Evacuation Locations
- The General Center will be used as a receiving storage place for goods and a volunteer center.
- Ushiki Hokubu Disaster Prevention Community Center and Flood Control Center will be used as a disaster prevention facility and will be partly used as an evacuation location.



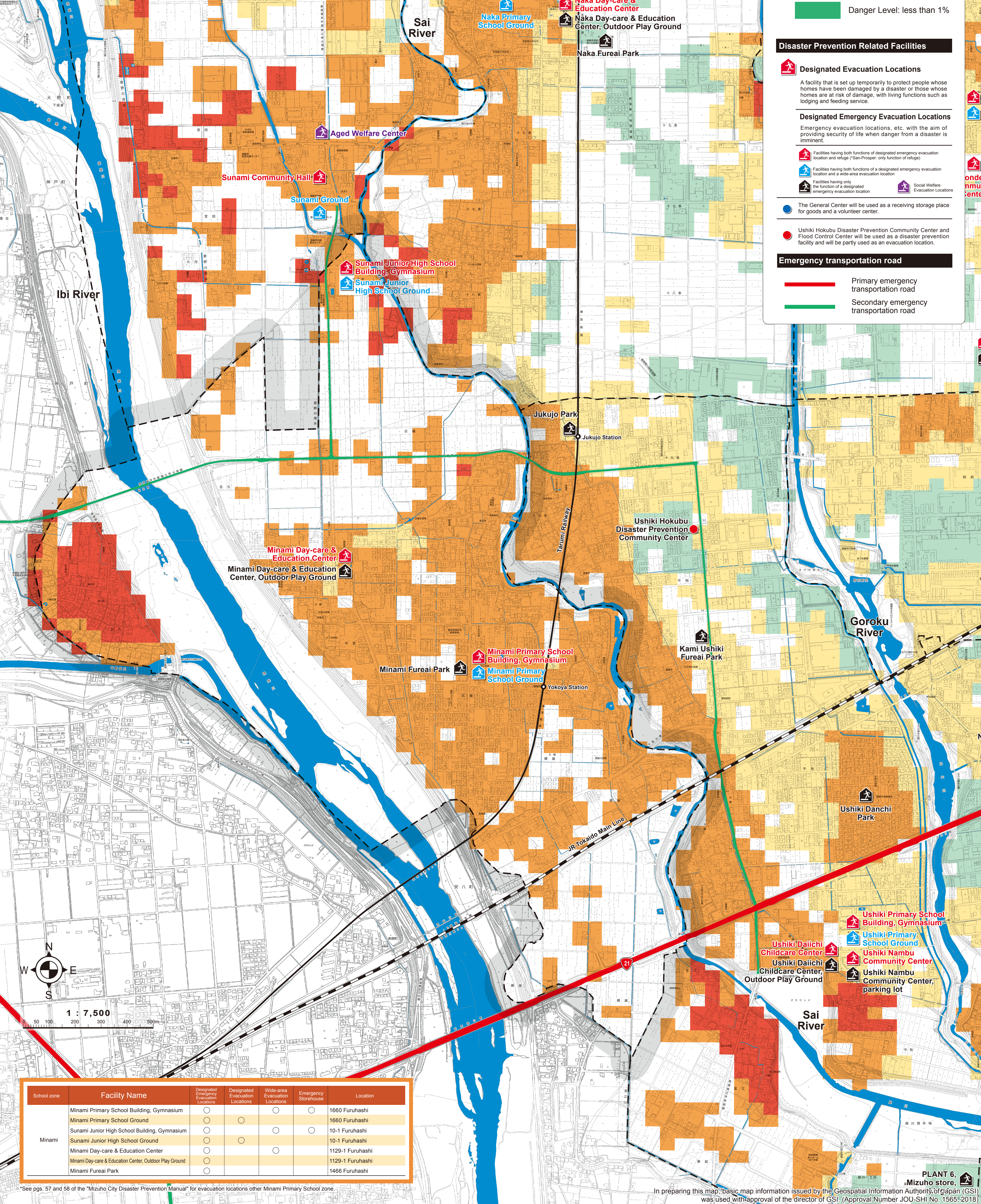


# Minami Primary School zone

## Mizuho City Hazard Map

### Earth-quake

The Danger Level Map by Location shows the distribution of building damage caused by earthquake shaking and liquefaction. Specifically, the degree to which the building is damaged is represented as the "percentage of total collapse", when earthquake shaking reaches the strength shown in the Map of Predicted Intensity by Region. This "percentage of total collapse" indicates how many buildings are expected to be totally destroyed in each divided area of the city, using 50-m mesh topographical data. The higher the value of the "percentage of total collapse", the larger the damage to buildings in that area. The risk of collapse of buildings depends on the year the house was built (especially before 1981), the structure and other conditions of the construction. If there is significant shaking or damage to the location of your home, prepare well for earthquakes from day to day by giving priority to such measures as securing furniture, receiving a seismic diagnosis and making antiseismic reinforcement.



### Danger Level Map by Location

Legend of percentage of total collapse

- Danger Level: 10% or more
- Danger Level: 4 to 10%
- Danger Level: 2 to 4%
- Danger Level: 1 to 2%
- Danger Level: less than 1%

Disaster Prevention Related Facilities

**Designated Evacuation Locations**

A facility that is set up temporarily to protect people whose homes have been damaged by a disaster or those whose homes are at risk of damage, with living functions such as lodging and feeding service.

**Designated Emergency Evacuation Locations**

Emergency evacuation locations, etc. with the aim of providing security of life when danger from a disaster is imminent.

- Facilities having both functions of designated emergency evacuation location and refuge (\*San-Prospers: only function of refuge)
- Facilities having both functions of a designated emergency evacuation location and a wide-area evacuation location
- Facilities having only the function of a designated emergency evacuation location
- Social Welfare Evaluation Locations

The General Center will be used as a receiving storage place for goods and a volunteer center.

Ushiki Hokubu Disaster Prevention Community Center and Flood Control Center will be used as a disaster prevention facility and will be partly used as an evacuation location.

**Emergency transportation road**

- Primary emergency transportation road
- Secondary emergency transportation road

School zone	Facility Name	Designated Emergency Evacuation Locations	Designated Evacuation Locations	Wide-area Evacuation Locations	Emergency Storehouse	Location
Minami	Minami Primary School Building, Gymnasium	○			○	1660 Furuhashi
	Minami Primary School Ground	○	○			1660 Furuhashi
	Sunami Junior High School Building, Gymnasium	○		○	○	10-1 Furuhashi
	Sunami Junior High School Ground	○	○			10-1 Furuhashi
	Minami Day-care & Education Center	○		○		1129-1 Furuhashi
	Minami Day-care & Education Center, Outdoor Play Ground	○				1129-1 Furuhashi
	Minami Fureai Park	○				1466 Furuhashi

\*See pgs. 57 and 58 of the "Mizuho City Disaster Prevention Manual" for evacuation locations other Minami Primary School zone.





## Honden Primary School zone

## Mizuho City Hazard Map

# Earthquake

The Danger Level Map by Location shows the distribution of building damage caused by earthquake shaking and liquefaction. Specifically, the degree to which the building is damaged is represented as the "percentage of total collapse", when earthquake shaking reaches the strength shown in the Map of Predicted Intensity by Region. This "percentage of total collapse" indicates how many buildings are expected to be totally destroyed in each divided area of the city, using 50-m mesh topographical data. The higher the value of the "percentage of total collapse", the larger the damage to buildings in that area.

The risk of collapse of buildings depends on the year the house was built (especially before 1981), the structure and other conditions of the construction. If there is significant shaking or damage to the location of your home, prepare well for earthquakes from day to day by giving priority to such measures as securing furniture, receiving a seismic diagnosis and making antiseismic reinforcement.

## Danger Level Map by Location

### Legend of percentage of total collapse

- Danger Level: 10% or more
- Danger Level: 4 to 10%
- Danger Level: 2 to 4%
- Danger Level: 1 to 2%
- Danger Level: less than 1%

### Disaster Prevention Related Facilities



#### Designated Evacuation Locations

A facility that is set up temporarily to protect people whose homes have been damaged by a disaster or those whose homes are at risk of damage, with living functions such as lodging and feeding service.

#### Designated Emergency Evacuation Locations

Emergency evacuation locations, etc. with the aim of providing security of life when danger from a disaster is imminent.

- Facilities having both functions of designated emergency evacuation location and refuge ("San-Proser" only function of refuge)
- Facilities having both functions of a designated emergency evacuation location and a wide-area evacuation location
- Facilities having only the function of a designated emergency evacuation location
- Social Welfare Evacuation Locations

The General Center will be used as a receiving storage place for goods and a volunteer center.

Ushiki Hokuho Disaster Prevention Community Center will be used as a disaster prevention facility and will be partly used as an evacuation location.

### Emergency transportation road

- Primary emergency transportation road
- Secondary emergency transportation road

School zone	Facility Name	Designated Emergency Evacuation Locations	Designated Evacuation Locations	Wide-area Evacuation Locations	Emergency Storehouse	Location
Honden	Honden Primary School Building, Gymnasium	○		○	○	938 Honden
	Honden Primary School Ground		○			938 Honden
	Hozumi Kita Junior High School Building, Gymnasium	○		○	○	2000 Honden
	Hozumi Kita Junior High School Building, Minami-kyugijo	○	○			2000 Honden
	Honden Daiichi Childcare Center	○		○		1915 Honden
	Honden Daiichi Childcare Center, Outdoor Play Ground	○				1915 Honden
	Honden Daini Childcare Center	○		○		387 Tadakoshi
	Honden Daini Childcare Center, Outdoor Play Ground	○				387 Tadakoshi
	Hozumi Kindergarten	○		○		500 Tadakoshi
	Hozumi Kindergarten, Outdoor Play Ground	○				500 Tadakoshi
	Honden Community Center	○		○		977-1 Honden
	Seseragi Park	○				2201-15 Honden
	San Proser			Private		1061 Tadakoshi

\*See pgs. 57 and 58 of the "Mizuho City Disaster Prevention Manual" for evacuation locations other Honden Primary School zone.

In preparing this map, basic map information issued by the Geospatial Information Authority of Japan (GSI) was used with approval of the director of GSI. (Approval Number JOU-SHI No. 1565, 2018)





# Hozumi Primary School zone

## Mizuho City Hazard Map

### Earth-quake

The Danger Level Map by Location shows the distribution of building damage caused by earthquake shaking and liquefaction. Specifically, the degree to which the building is damaged is represented as the "percentage of total collapse", when earthquake shaking reaches the strength shown in the Map of Predicted Intensity by Region. This "percentage of total collapse" indicates how many buildings are expected to be totally destroyed in each divided area of the city, using 50-m mesh topographical data. The higher the value of the "percentage of total collapse", the larger the damage to buildings in that area. The risk of collapse of buildings depends on the year the house was built (especially before 1981), the structure and other conditions of the construction. If there is significant shaking or damage to the location of your home, prepare well for earthquakes from day to day by giving priority to such measures as securing furniture, receiving a seismic diagnosis and making antiseismic reinforcement.

School zone	Facility Name	Designated Emergency Evacuation Locations	Designated Evacuation Locations	Wide-area Evacuation Locations	Emergency Storehouse	Location
Hozumi	Hozumi Primary School Building, Gymnasium	○			○	452 Hozumi
	Hozumi Primary School Ground	○	○		○	452 Hozumi
	Hozumi Junior High School Building, Gymnasium	○		○	○	1888 Beppu
	Hozumi Junior High School Ground	○	○			1888 Beppu
	Asahi University, No. 6 Building, 10th Anniversary Memorial Hall	○		○	○	1851 Hozumi
	Asahi University Ground	○	○			1896-1 Hozumi
	Hozumi-no-mori Kodomo-en, Outdoor Play Ground	Private				966-1 Hozumi
	Beppu Childcare Center			○		144-1 Beppu
	Beppu Childcare Center, Outdoor Play Ground	○				140 Beppu
	Civic Center			○		1300-3 Beppu
	Hozumi Ground	○				452-1 Inasato
	Hozumi Daini Ground	○				607-1 Inasato
	Yanaishiki Park	○				680 Inasato
	Noguchi Park	○				947-1 Hozumi
	Iba Park	○				1599-1 Beppu
Mina	Asahikasei Ground	Private				2352-1 Beppu
	Kahma 21, Mizuho store, parking lot	Private				3110-1 Hozumi

\*See pgs. 57 and 58 of the "Mizuho City Disaster Prevention Manual" for evacuation locations other Hozumi Primary School zone.

### Danger Level Map by Location

#### Legend of percentage of total collapse

- Danger Level: 10% or more
- Danger Level: 4 to 10%
- Danger Level: 2 to 4%
- Danger Level: 1 to 2%
- Danger Level: less than 1%

#### Emergency transportation road

- Primary emergency transportation road
- Secondary emergency transportation road

#### Disaster Prevention Related Facilities

##### Designated Evacuation Locations

A facility that is set up temporarily to protect people whose homes have been damaged by a disaster or those whose homes are at risk of damage, with living functions such as lodging and feeding service.

##### Designated Emergency Evacuation Locations

Emergency evacuation locations, etc. with the aim of providing security of life when danger from a disaster is imminent.

Facilities having both functions of designated emergency evacuation location and refuge ("San-Proser" only function of refuge)

Facilities having both functions of a designated emergency evacuation location and a wide-area evacuation location

Facilities having only the function of a designated emergency evacuation location

Social Welfare Evaluation Locations

The General Center will be used as a receiving storage place for goods and a volunteer center.

Ushiki Hokubu Disaster Prevention Community Center and Flood Control Center will be used as a disaster prevention facility and will be partly used as an evacuation location.